



SP 2.4

- 220 V AC
- 2
- 2
- 
- 
- 
- 
- 
- IP 65

ISO 5211

<b>284.</b>	<b>x</b>	<b>-</b>	<b>x</b>	<b>x</b>	<b>x</b>	<b>x</b>	<b>x</b>	<b>x</b>	<b>/</b>	<b>x</b>	<b>x</b>
-------------	----------	----------	----------	----------	----------	----------	----------	----------	----------	----------	----------

				10)	
/	o	e			↓
3.1		-25°C ... +55°C	C3	IP 67	1
		-25°C ... +55°C	C3	IP 68 <sup>11)</sup>	5
B2	+	-25°C ... +55°C	C4	IP 67	2
2		-50°C ... +40°C	C3	IP 67	3
2		-25°C ... +55°C	C3	IP 67	6
1	-	-50°C ... +40°C	C4	IP 67	7
2		-60°C ... +40°C	C3	IP 67	8

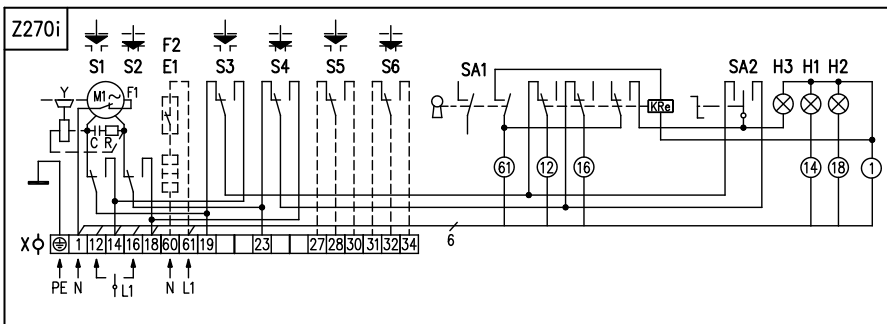
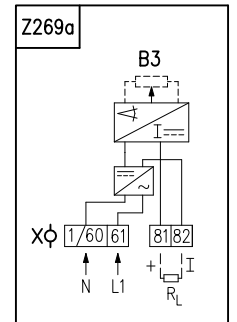
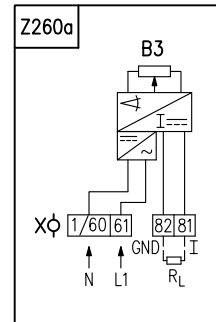
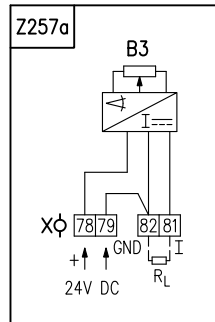
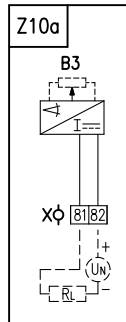
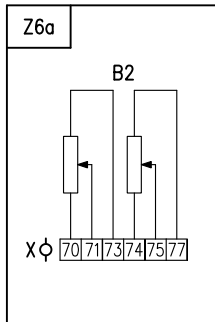
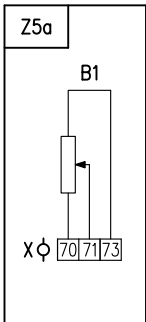
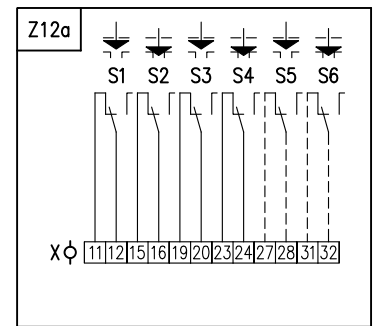
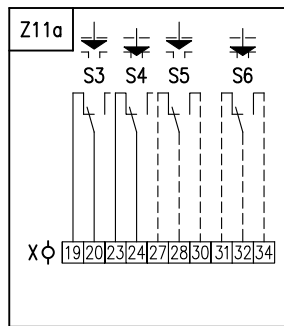
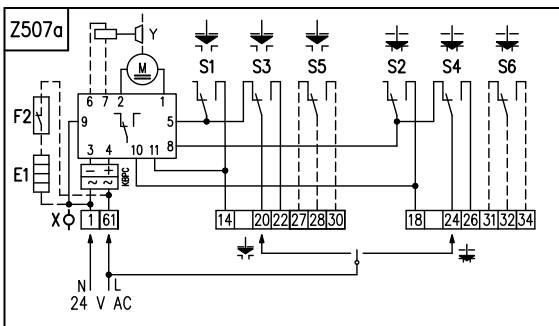
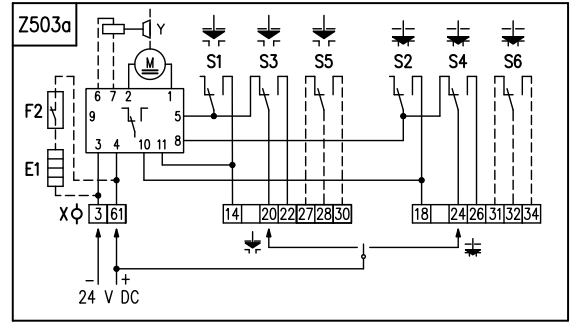
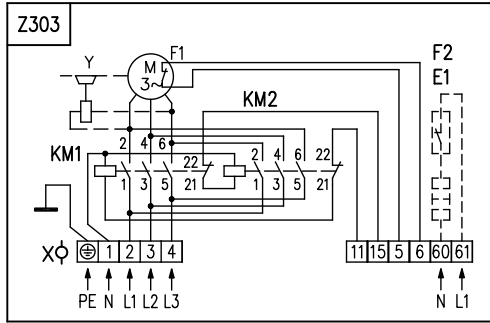
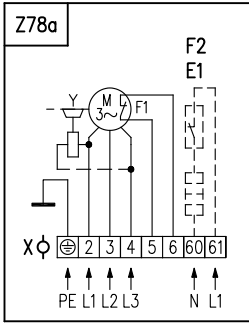
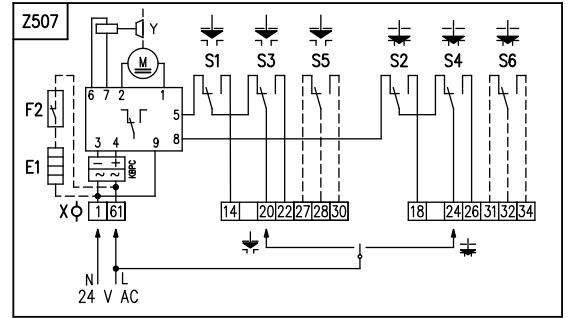
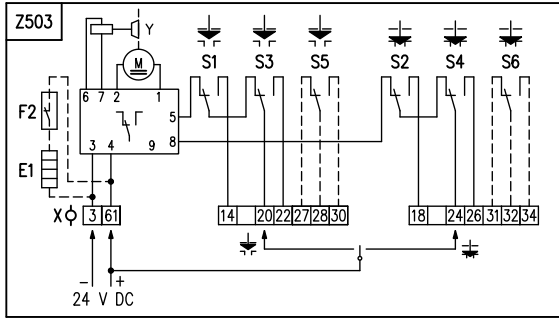
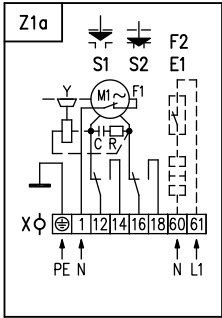
				↓
		230 V AC	Z1a + Z11a	0
		220 V AC		L
		3x400 V AC	Z78a + Z12a <sup>22)</sup>	9
		3x400 V AC <sup>28)</sup>	Z303 + Z12a <sup>22)</sup>	2
		3x380 V AC	Z78a + Z12a <sup>22)</sup>	M
		3x380 V AC <sup>28)</sup>	Z303 + Z12a <sup>22)</sup>	N
		24 V AC	Z507a	3
		24 V DC	Z503a	A
21)		230 V AC	Z1a + Z11a	5
		220 V AC		P
		3x400 V AC	Z78a + Z12a <sup>22)</sup>	7
		3x400 V AC <sup>28)</sup>	Z303 + Z12a <sup>22)</sup>	6
		3x380 V AC	Z78a + Z12a <sup>22)</sup>	R
		3x380 V AC <sup>28)</sup>	Z303 + Z12a <sup>22)</sup>	S
		24 V AC	Z507a	8
		24 V DC	Z503a	C

	33)	230 V, 220 V AC		3x380, 3x400 V AC, 24 V AC/DC			↓
				34)			
575 Nm	500 Nm	40 s/90°	60 W	40 s/90°	65 W, AC/DC	90 W	0
		80 s/90°		80 s/90°	3x400 V AC	1	
		160 s/90°	20 W	-	-	-	2

		↓
	60°	A
	90°	B
	120°	C
	160°	D
	60°	K
	90°	L
	120°	M
	160°	N
	360°	P
> 0° & 360° <sup>41)</sup>		Z



SP 1, SP 2, SP 2.3, SP 2.4



- 1.
- 2.
- 3.
- 4.

24.

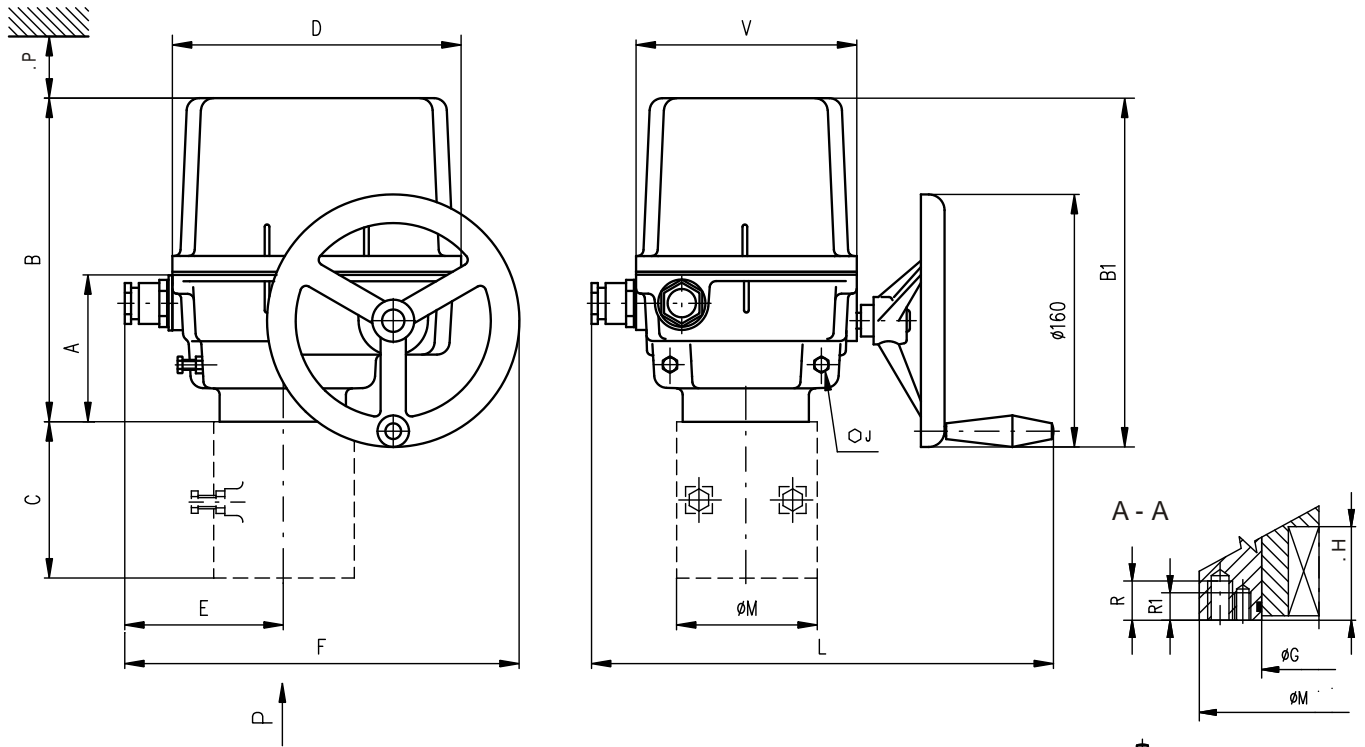
24 VAC

PE.



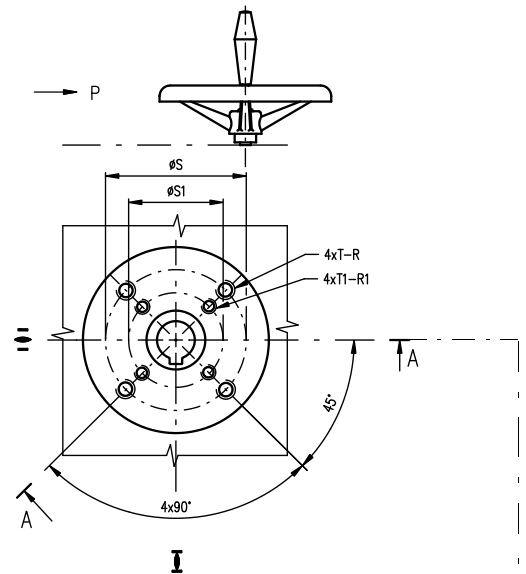
Z1 .....	:				
Z5 ..... c	,				
Z6 .....	,				
Z10 .....				CPT - 2-	
Z11 .....					
Z12 .....		S1 - S6			
Z78 .....					
Z90c .....					
Z257 .....			- 3-		
Z260 .....			- 3-		
Z269 .....				- 2-	
Z270i .....					
Z303 .....					
Z304a .....					
Z503 .....		SP 1		24 V DC	
Z503a .....		SP 2, SP 2.3, SP 2.4			24 V DC
Z505 .....		SP 2, SP 2.3, SP 2.4			24 V DC
Z505b .....		SP 1		24 V DC	
Z507 .....		SP 1	24 V AC		
Z507a .....		SP 2, SP 2.3, SP 2.4		24 V AC	
Z509a .....		SP 2, SP 2.3, SP 2.4		24 V AC	
Z509b .....		SP 1	24 V AC		
B1 .....	p				
B2 .....	p				
B3 .....				CPT	
C .....					
E1 .....					
F1 .....					
F2 .....					
H1 .....		" "			
H2 .....		" "			
H3 .....		" "			"
I .....					
KM1, KM2 .....					
M1 .....					
M3 .....					
R .....					
R <sub>L</sub> .....					
SA1 .....				- 0 -	"
SA2 .....		" "	- "		
S1 .....		" "	" "		
S2 .....		" "	" "		
S3 .....	"	" "	" "		
S4 .....	"	" "	" "		
S5 .....		" "	" "		
S6 .....		" "	" "		
X .....					
Y .....					

SP 1, SP 2, SP 2.3, SP 2.4



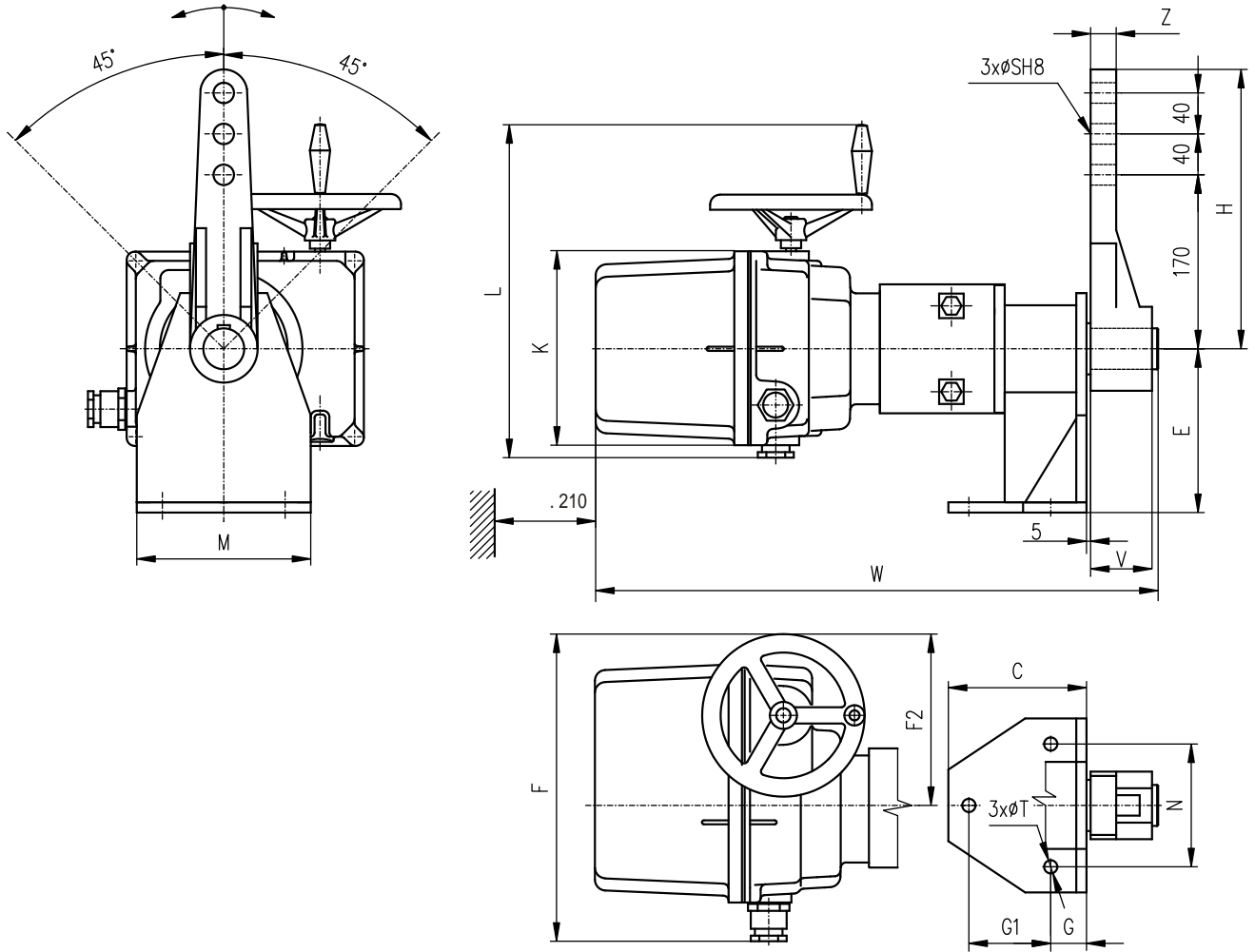
	A	B	B1	C	D	E	F	J	L	M	P	V
SP 1	102	221	229	-	183	93	243	17	280 396*	90	160	140
SP 2								17		90		
SP 2.3	117	316	323	112	232	119	294	22	330	125	210	190
SP 2.4				127				22	446*	150		

	G	H	R	R1	S	S1	T	T1	
SP 1	40	37	16	14	70	50	M8	M6	F07/F05
SP 2	40	49	18	14	70	50	M8	M6	F07/F05
SP 2.3	55	56	25	17	102	70	M10	M8	F10/F07
SP 2.4	65	71	30	25	125	102	M12	M10	F12/F10



D-xx (Axx)		L-xx (Bxx)		H-xx (Cxx)			V-xx (D01 - D09)			V-30 (D10)		
ISO		ISO		ISO			ISO					
D-xx	U	L-xx	U	H-xx	U	V	V-xx	W	Z	X		
D-14	14	L-14	14	H-14	14	22	V-20	20.0	22.5	6.0		
D-17	17	L-17	17	H-11	11	18	V-22	22.0	24.5	6.0		
D-22	22	L-22	22	H-8	8	13	V-32.2	32.2	35	6.5		
D-27	27	L-27	27	H-17	17	25	V-17	17.0	19.5	6.0		
D-11	11	L-11	11	H-13	13	19	V-28	28.0	30.9	8.0		
D-16	16	L-16	16	H-22	22	32	V-42	42.0	45.1	12.0		
				H-16	16	22	V-45.4	45.4	48.8	10.0		
				H-27	27	48	V-50	50.0	53.5	14.0		
				H-19	19	28	V-18	18.0	20.5	6.0		
				H-10	10	16	V-30	30.0	32.5	8.0		

SP 2.3 SP 2.4



	C	E	F	F2	G	G1	H	W	K	L	M	N	S	T	V	Z
SP 2.3	135	160	294	175	35	80	278	584	190	330 446*	170	120	20	13	56	20
SP 2.4	200	220	294	175	60	120	278	654	190	330 446*	228	170	25	17	80	30

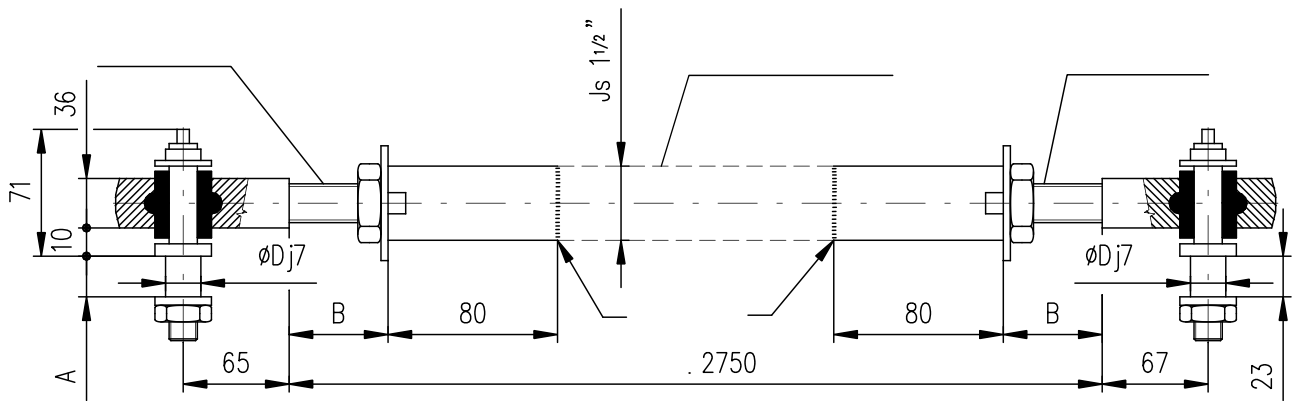
SP 2.3 SP 2.4

E

	H	S	U	V	Z	Y	Y1	
	SP 2.3	43.1	40	12	66	56	4	7
SP 2.4	53.8	50	16	82	70	4	7	E04

P - 1395

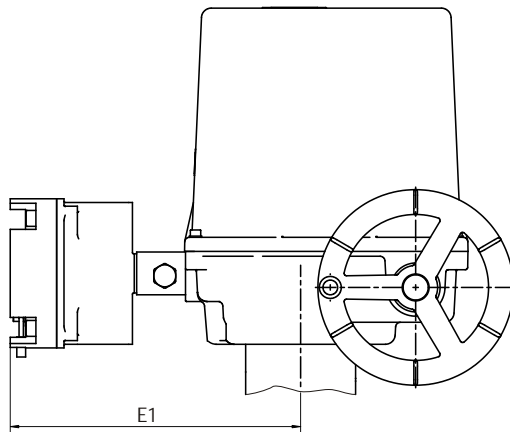
TV 40-1/20 TV 50-1/25



P-1413/B	SP 2.4	TV 50-1/25	28	Min.30	25
P-1413/A	SP 2.3	TV 40-1/20	23	Max.50	20
			A	B	D

P - 1413

SP 2.3 SP 2.4



SP 2.4	-25° / -50 C°	198
SP 2.3	-25° / -50 C°	198
	o	E1

P - 2148/F