

REMATIC, DMS3,
 24 V DC (2P)
 (3P)
 PROFIBUS DP V0/V1 MODBUS RTU.
 : LED (, RS-232).
 « - ». a a



DMS3

- 220 V AC
- T
- a
- 60 % 100 %
- R1, R2 (18)¹⁾
- READY¹⁾
- - 0/4 - 20 mA, 4 - 12 mA, 12 - 20 mA 0/2 - 10 V¹⁾
- 24 V DC - , ,
- 24 V DC - , ,
- ESD ()
- - 4 - 20 mA a - (2P)¹⁾
- 24 V DC, 40
- LED
- (, ,)
- RS 232
- ISO 5211
- IP 67
- RE3, RE4, RE5¹⁾
- RE1, RE2, RE3, RE4, RE5, READY¹⁾
- PROFIBUS DP V0/V1,
- MODBUS RTU,

1) Profibus Modbus

SPR 1PA

231.	x	-	x	x	x	x	x	/	x	x
------	---	---	---	---	---	---	---	---	---	---

/		o	e	10)		
3.1		-25°C ... +55°C		C3	IP 67	1
		-25°C ... +55°C		C3	IP 68 ¹¹⁾	5
B2	+	-25°C ... +55°C		C4	IP 67	2
2		-50°C ... +40°C		C3	IP 67	3
2		-25°C ... +55°C		C3	IP 67	6
1	-	-50°C ... +40°C		C4	IP 67	7
2		-60°C ... +40°C		C3	IP 67	8

		23)		
	50 Hz	230 V AC	Z514, Z523, Z515 Z574, Z574c	0
		220 V AC		L
		24 V AC		3
	60 Hz	240 V AC	Z514, Z523, Z515 Z574, Z574c	V
		120 V AC		T
		24 V AC		J
50 Hz	3x400 V AC	Z532, Z536, Z537 Z574e, Z574b	2	
	3x380 V AC		N	

		32)	33)			
		« - »		50 Hz	60 Hz	
46 Nm	40 Nm	-	-	10 s/90°	8 s/90°	0
90 Nm	80 Nm	63 Nm	63 Nm	20 s/90°	17 s/90°	1
90 Nm	80 Nm	63 Nm	63 Nm	40 s/90°	34 s/90°	2
72 Nm	63 Nm	50 Nm	50 Nm	80 s/90° ³⁴⁾	67 s/90°	3

		60°		A
		90°		B
		120°		C
		160°		D
-	42)	50° - 120°		M
		90° - 160°		N
		160° - 360°		P

DMS3	2P	24 V DC		-	Z515, Z537	F
	3P/2P	0/4 - 20 mA	24 V DC	4 - 20 mA	Z514, Z532	G
		0/2 - 10 V			Z523, Z536	H
DMS3 M1	/2P	MODBUS RTU	24 V DC	-	Z574c, Z574e	M
DMS3 M2					Z574, Z574b	N
DMS3 P1		PROFIBUS DP V0 / V1			Z574c, Z574e	P
DMS3 P2					Z574, Z574b	R

SPR 1PA

231. x - x x x x x x / x x

		ISO		
ISO 5211	F05/F07	D-14	14x14	A
		L-14		B
		H-14		C
		V-20	Ø20 ⁶²⁾	D
		D-17	17x17	E
		L-17		F
		H-11		G
		D-11	11x11	H
		L-11		Q
		H-8	8x13	N
		V-17	Ø17 ⁶²⁾	P
		D-16	16x16	R
		L-16		S
		H-10	10x16	T
		V-18	Ø18 ⁶²⁾	U
		V-30	Ø30 ⁶³⁾	V
		-	Ø 8 ⁶⁴⁾	W
H-17	17x25	Z		
	-	E01	J	
	-	-	K	
	-	-	L	
			P-1147 P-2148	
			P-1162 P-0210, P-2148	
			TV 360	

A		-	0	1
B		-	0	3
D	RE3, RE4, RE5 (DMS3 RE3) ⁷¹⁾	Z500a	0	5
E	RE1, RE2, RE3, RE4, RE5, READY (DMS3 RE6) ⁷¹⁾	Z500	0	6
F	LCD (-40°C)	Z473a	0	7

: A+B=20, A+D=22, A+E=23, A+F=24, B+D=29, B+E=30, B+F=31, D+F=40, E+F=44, A+B+D=52, A+B+E=53, A+B+F=54, A+D+F=63, A+E+F=67, B+D+F=80, B+E+F=84, A+B+E+F=113, A+B+D+F=114

DB-9F/RJ45	224A80100
------------	-----------

10) : ISO 9223/EN ISO 12944-2.
 11) IP 68 - 10 / 48
 23) S2-10 min a S4-25% 90 / .
 32) S4-25% , 90 - 1200 / .
 33) 3x380 / 3x400 VAC.
 34) 42)
 62) ()
 63) ø8.
 64) PROFIBUS MODBUS RTU.
 71)

SPR 2PA

232.	x	-	x	x	x	x	x	/	x	x
------	---	---	---	---	---	---	---	---	---	---

/		o	e	10)	↓	
3.1		-25°C ... +55°C		C3	IP 67	1
		-25°C ... +55°C		C3	IP 68 ¹¹⁾	5
B2	+	-25°C ... +55°C		C4	IP 67	2
2		-50°C ... +40°C		C3	IP 67	3
2		-25°C ... +55°C		C3	IP 67	6
1	-	-50°C ... +40°C		C4	IP 67	7
2		-60°C ... +40°C		C3	IP 67	8

		23)		↓	
		50 Hz	230 V AC	Z514, Z515, Z523, Z574, Z574c	0
			220 V AC		L
		60 Hz	120 VAC	Z532b, Z536b, Z537b Z574a, Z574d	T
			3x400 V AC		2
-		50 Hz	3x380 V AC	Z532f, Z536f, Z537f	N
			3x400 V AC		E
c		50 Hz	3x380 V AC	Z532f, Z536f, Z537f	F

		32)	33)			↓
« - »				50 Hz	60 Hz	
72 Nm	63 Nm	-		5 s/90°	4 s/90°	0
145 Nm	125 Nm	100 Nm		10 s/90°	8 s/90°	1
				20 s/90°	17 s/90°	2
				40 s/90°	34 s/90°	3
				80 s/90° ³⁴⁾	67 s/90°	4

		42)	↓
		60°	A
		90°	B
		120°	C
		160°	D
-		50° - 120°	M
		90° - 160°	N
		160° - 360°	P

						↓
DMS3	2P	24 V DC		-	Z515, Z537b, Z537f	F
	3P/2P	0/4 - 20 mA	24 V DC	4 - 20 mA	Z514, Z532b, Z532f	G
0/2 - 10 V		Z523, Z536b, Z536f			H	
DMS3 M1	/ 2P	MODBUS RTU	24 V DC	-	Z574c, Z574d	M
DMS3 M2					Z574, Z574a	N
DMS3 P1		PROFIBUS DP V0 / V1			Z574c, Z574d	P
DMS3 P2					Z574, Z574a	R

SPR 2PA

232. x - x x x x x / x x

		ISO		
ISO 5211	F05/F07	D-17	17x17	P-1147 P-2148
		L-17		
		H-17	17x25	
		V-28	Ø28 ⁶²⁾	
		H-11	11x18	
		D-16	16x16	
		L-16		
		D-14	14x14	
		L-14		
		H-14	14x22	
		V-22	Ø22 ⁶²⁾	
		V-30	Ø30 ⁶³⁾	
		-	Ø8 ⁶⁴⁾	
		H-13	13x19	
	-	E05	Ø25	P-1162 P-0210, P-2148
	-	-	-	
+ +	TV 360	-	-	

A			-	0	1
B			-	0	3
D	RE3, RE4, RE5 (DMS3 RE3) ⁷¹⁾		Z500a	0	5
E	RE1, RE2, RE3, RE4, RE5, READY (DMS3 RE6) ⁷¹⁾		Z500	0	6
F	LCD (-25°C)		Z473a	0	7
: A+B=20, A+D=22, A+E=23, A+F=24, B+D=29, B+E=30, B+F=31, D+F=40, E+F=44, A+B+D=52, A+B+E=53, A+B+F=54, A+D+F=63, A+E+F=67, B+D+F=80, B+E+F=84, A+B+E+F=113, A+B+D+F=114					

DB-9F/RJ45	224A80100
------------	-----------

10) : ISO 9223/EN ISO 12944-2.
 11) IP 68 - 10 / 48
 23)
 32) S2-10 min a S4-25% 90 / .
 33) S4-25%, 90 - 1200 / .
 34) 3x380/3x400 V AC.
 42)
 62) ().
 63)
 64) Ø8.
 65)
 71) 230/220 V AC 3x400/3x380 V AC.
 PROFIBUS MODBUS RTU.

SPR 2.3PA

233.	x	-	x	x	x	x	x	/	x	x
------	---	---	---	---	---	---	---	---	---	---

/		o	e	10)		↓
3.1		-25°C ... +55°C		C3	IP 67	1
		-25°C ... +55°C		C3	IP 68 ¹¹⁾	5
B2	+	-25°C ... +55°C		C4	IP 67	2
2		-50°C ... +40°C		C3	IP 67	3
2		-25°C ... +55°C		C3	IP 67	6
1	-	-50°C ... +40°C		C4	IP 67	7
2		-60°C ... +40°C		C3	IP 67	8

		23)				↓
	50 Hz	230 V AC	Z514, Z515, Z523, Z574, Z574c	0		
		220 V AC		L		
	60 Hz	120 VAC		T		
	50 Hz	3x400 V AC		Z532b, Z536b, Z537b Z574a, Z574d	2	
3x380 V AC		N				
3x400 V AC		Z532f, Z536f, Z537f	E			
3x380 V AC	F					

		32)	33)			↓
« - »				50 Hz	60 Hz	
290 Nm	250 Nm	200 Nm	20 s/90°	16 s/90°	0	
			40 s/90°	34 s/90°	1	
			80 s/90°	67 s/90°	2	
			160 s/90° ³⁴⁾	135 s/90°	3	

				↓
		60°	A	
		90°	B	
		120°	C	
		160°	D	
-	42)	50° - 120°	M	
		90° - 160°	N	
		160° - 360°	P	

						↓
DMS3	2P	24 V DC		-	Z515, Z537b, Z537f	F
	3P/2P	0/4 - 20 mA	24 V DC	4 - 20 mA	Z514, Z532b, Z532f	G
0/2 - 10 V		Z523, Z536b, Z536f			H	
DMS3 M1	/ 2P	MODBUS RTU	24 V DC	-	Z574c, Z574d	M
DMS3 M2					Z574, Z574a	N
DMS3 P1		PROFIBUS DP V0 / V1			Z574c, Z574d	P
DMS3 P2					Z574, Z574a	R

SPR 2.4PA

234.	x	-	x	x	x	x	x	/	x	x
------	---	---	---	---	---	---	---	---	---	---

/		o	e	10)		
3.1		-25°C ... +55°C		C3	IP 67	1
		-25°C ... +55°C		C3	IP 68 ¹¹⁾	5
B2	+	-25°C ... +55°C		C4	IP 67	2
2		-50°C ... +40°C		C3	IP 67	3
2		-25°C ... +55°C		C3	IP 67	6
1	-	-50°C ... +40°C		C4	IP 67	7
2		-60°C ... +40°C		C3	IP 67	8

		23)			
50 Hz		230 V AC	Z514, Z515, Z523, Z574, Z574c	0	
		220 V AC		L	
60 Hz		120 VAC		T	
50 Hz	-	3x400 V AC	Z532b, Z536b, Z537b Z574a, Z574d	2	
		3x380 V AC		N	
		3x400 V AC	Z532f, Z536f, Z537f	E	
3x380 V AC	F				
c					

		32)	33)			
« - »				50 Hz	60 Hz	
575 Nm	500 Nm	400 Nm		40 s/90°	34 s/90°	0
				80 s/90°	68 s/90°	1
				160 s/90° ³⁴⁾	135 s/90°	2

		60°	A
		90°	B
		120°	C
		160°	D
-	42)	50° - 120°	M
		90° - 160°	N
		160° - 360°	P

DMS3	2P	24 V DC		-	Z515, Z537b, Z537f	F
	3P/2P	0/4 - 20 mA	24 V DC	4 - 20 mA	Z514, Z532b, Z532f	G
0/2 - 10 V		Z523, Z536b, Z536f			H	
DMS3 M1	/ 2P	MODBUS RTU	24 V DC	-	Z574c, Z574d	M
DMS3 M2					Z574, Z574a	N
DMS3 P1		PROFIBUS DP V0 / V1			Z574c, Z574d	P
DMS3 P2					Z574, Z574a	R

SPR 2.4PA

234. x - x x x x x / x x

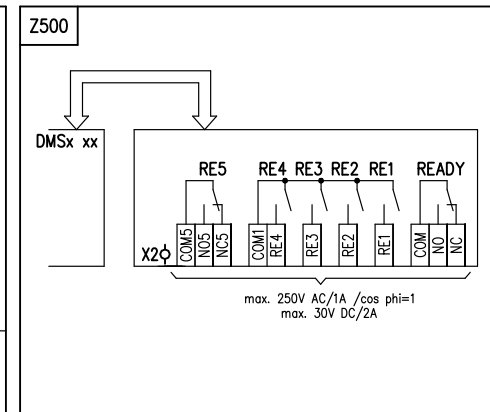
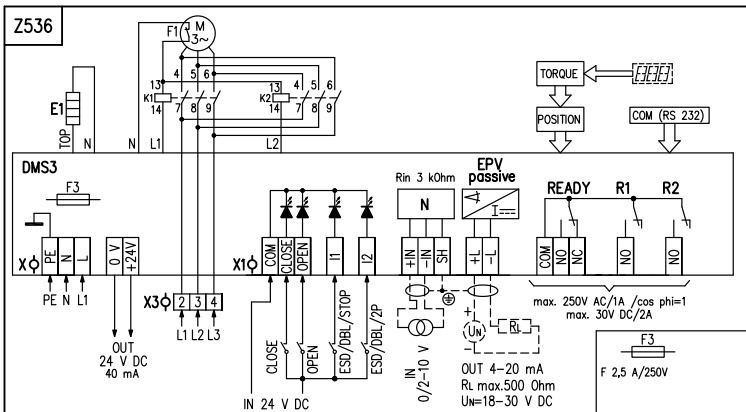
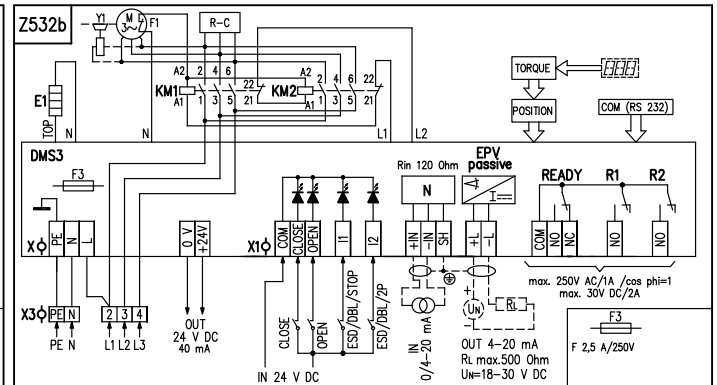
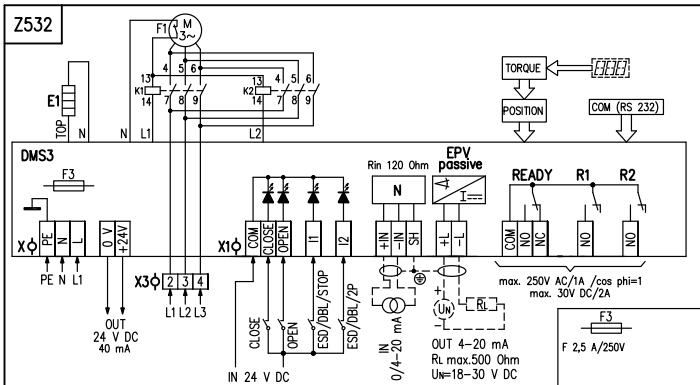
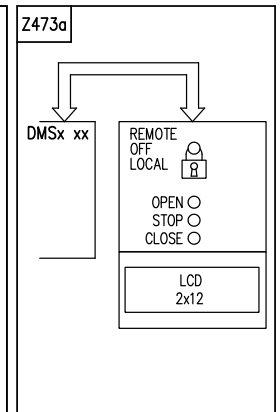
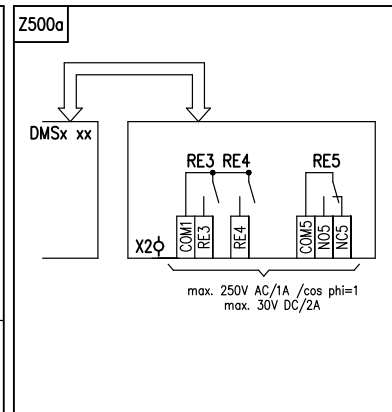
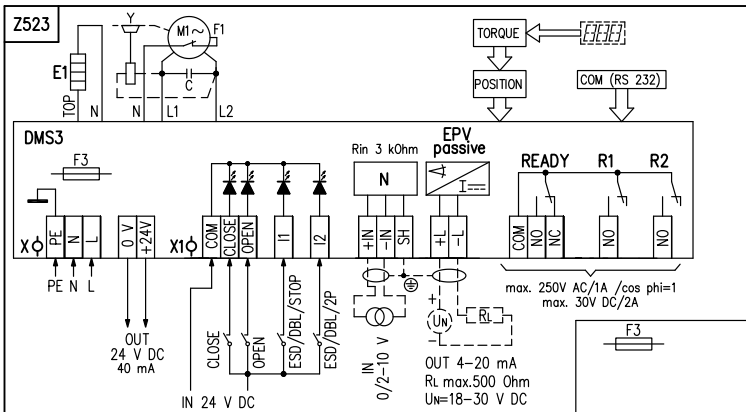
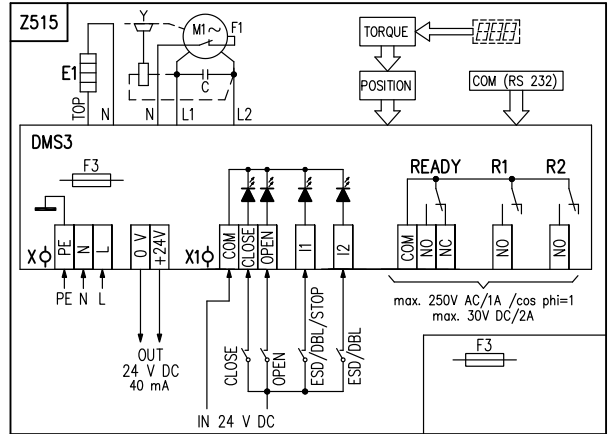
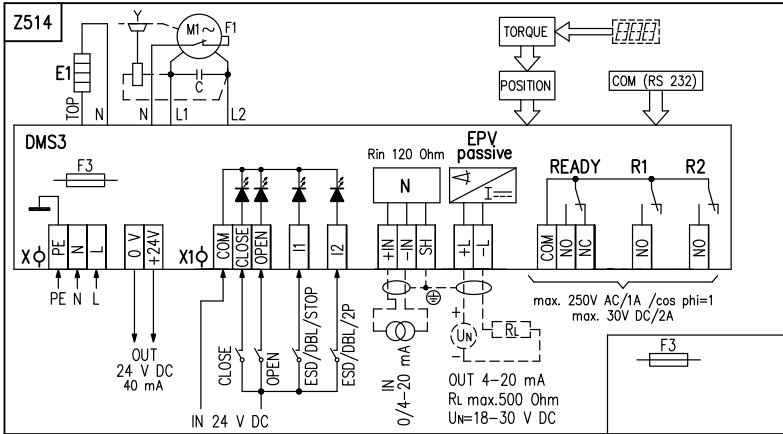
		ISO			
ISO 5211	F10/F12	D-27	27x27	P-1147 P-2148	A
		L-27			B
		H-27	27x48 ⁶²⁾		C
		V-50	Ø50 ⁶²⁾		D
		D-22	22x22		E
		L-22			F
		H-22	22x32 ⁶²⁾		G
		V-42	Ø42		H
		-	- ⁶⁵⁾		M
		H-16	16x22		N
		H-19	19x28		P
		V-45.4	Ø45.4 ⁶³⁾		V
-	-	E04	Ø50	P-1395 P-1413/B, P-2148	J
-	-	-	-		K
-	-	-	-		L
+ + TV 40-1/20		-	-	-	-

A			-	0	1
B			-	0	3
D	RE3, RE4, RE5 (DMS3 RE3) ⁷¹⁾		Z500a	0	5
E	RE1, RE2, RE3, RE4, RE5, READY (DMS3 RE6) ⁷¹⁾		Z500	0	6
F	LCD (P-2032. ⁶⁶⁾ -25°C)		Z473a	0	7
: A+B=20, A+D=22, A+E=23, A+F=24, B+D=29, B+E=30, B+F=31, D+F=40, E+F=44, A+B+D=52, A+B+E=53, A+B+F=54, A+D+F=63, A+E+F=67, B+D+F=80, B+E+F=84, A+B+E+F=113, A+B+D+F=114					

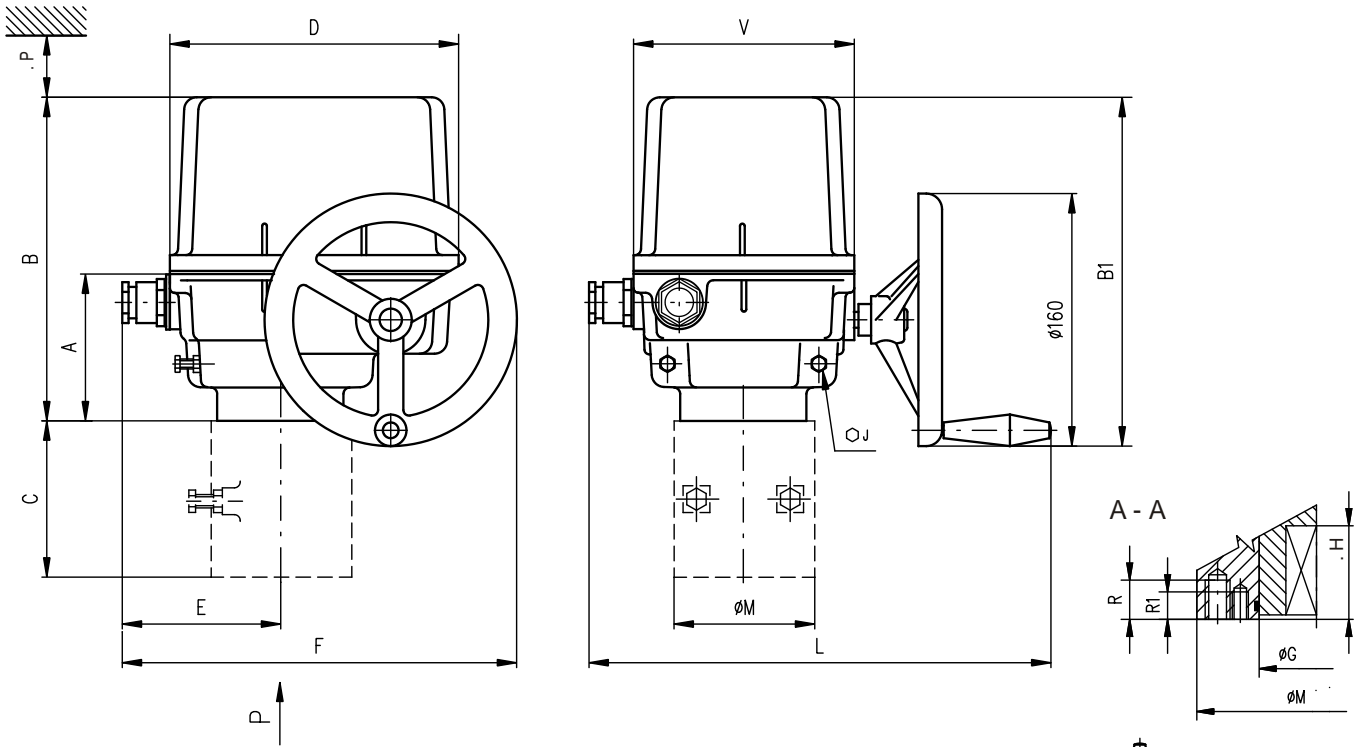
DB-9F/RJ45	224A80100
------------	-----------

- 10) : ISO 9223/EN ISO 12944-2.
- 11) IP 68 - 10 / 48
- 23)
- 32) S2-10 min a S4-25% 90 /
- 33) S4-25%, 90 - 1200 /
- 34) 3x380 / 3x400 VAC.
- 42)
- 62) ()
- 63)
- 64) Ø8.
- 65)
- 71) PROFIBUS MODBUS RTU. 230/220 VAC 3x400/3x380 VAC.

SPR 1PA - SPR 2.4PA

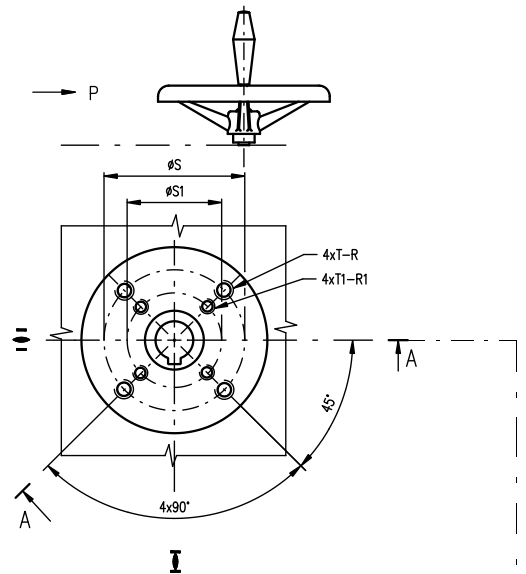


SPR 1PA - SPR 2.4PA

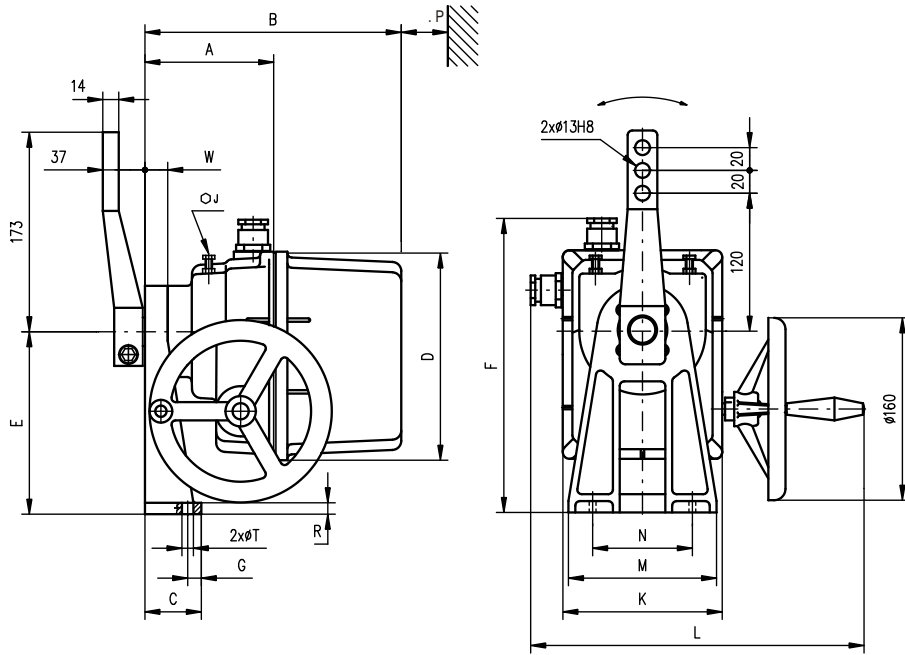


	A	B	B1	C	D	E	F	J	L	M	P	V
SPR 1PA	102	221	229	-	183	93	243	17	280 396*	90	160	140
SPR 2PA				-				17		90		
SPR 2.3PA	117	316	323	112	232	119	294	22	330 446*	125	210	190
SPR 2.4PA				127				22		150		

	G	H	R	R1	S	S1	T	T1	
SPR 1PA	40	37	16	14	70	50	M8	M6	F07/F05
SPR 2PA	40	49	18	14	70	50	M8	M6	F07/F05
SPR 2.3PA	55	56	25	17	102	70	M10	M8	F10/F07
SPR 2.4PA	65	71	30	25	125	102	M12	M10	F12/F10



D-xx (Axx)		L-xx (Bxx)		H-xx (Cxx)			V-xx (D01 - D09)		V-30 (D10)	
ISO		ISO		ISO			ISO			
D-xx	U	L-xx	U	H-xx	U	V	V-xx	W	Z	X
D-14	14	L-14	14	H-14	14	22	V-20	20.0	22.5	6.0
D-17	17	L-17	17	H-11	11	18	V-22	22.0	24.5	6.0
D-22	22	L-22	22	H-8	8	13	V-32.2	32.2	35	6.5
D-27	27	L-27	27	H-17	17	25	V-17	17.0	19.5	6.0
D-11	11	L-11	11	H-13	13	19	V-28	28.0	30.9	8.0
D-16	16	L-16	16	H-22	22	32	V-42	42.0	45.1	12.0
				H-16	16	22	V-45.4	45.4	48.8	10.0
				H-27	27	48	V-50	50.0	53.5	14.0
				H-19	19	28	V-18	18.0	20.5	6.0
				H-10	10	16	V-30	30.0	32.5	8.0



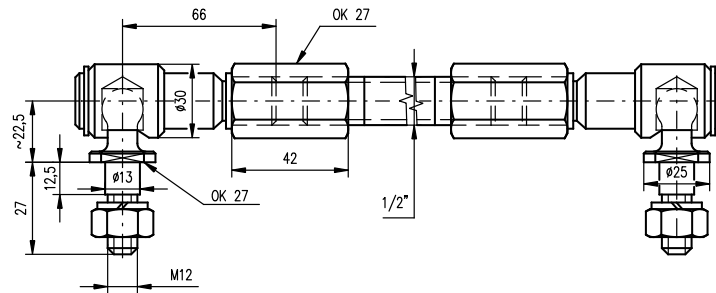
	A	B	C	D	E	F	F2	G	W	J	K	L	M	N	P	R	T
SPR 1PA	122	241	50	183	160	258	273 345*	12	20	13	140	280 396*	130	80	160	10	10.5
SPR 2PA	145	344	58	232	200	323	-	30	28	17	190	330 446*	160	90	210	11	12.6

SPR 1A SPR 2PA

Exx	H	S	U	V	Z	Y	Y1		
SPR 1PA	24.5	22	6	28	25	2	2	E01	
SPR 2PA	27.9	25	8	35	28	2	2	E02	

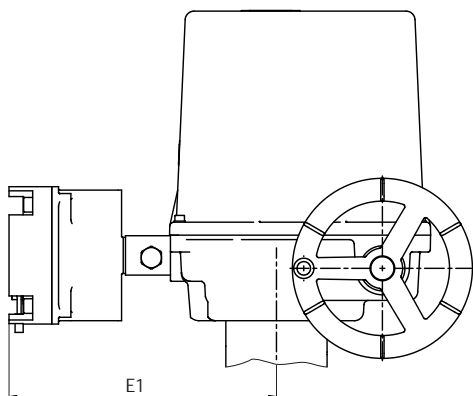
P - 1162

TV 160



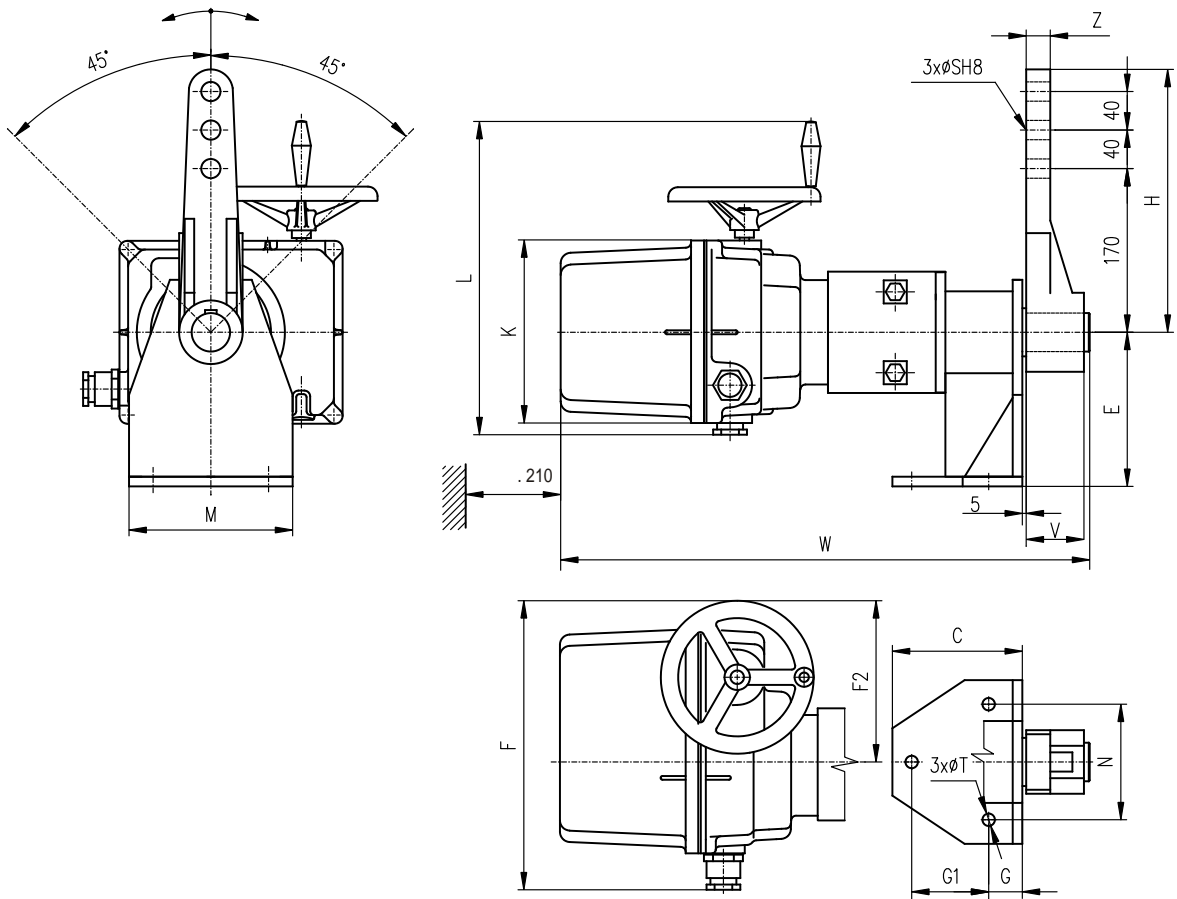
P - 0210

SPR 1PA, SPR 2PA, SPR 2.3PA, SPR 2.4PA



SPR 2PA	P-2148/J	-50 °C	198
SPR 2PA	P-2148/I	-25 °C	168
SPR 2PA	P-2148/D	-50 °C	173
SPR 1PA	P-2148/C	-25 °C	141
		o	E1

P - 2148



	C	E	F	F2	G	G1	H	W	K	L	M	N	S	T	V	Z
SPR 2.3PA	135	160	294	175	35	80	278	584	190	330 446*	170	120	20	13	56	20
SPR 2.4PA	200	220	294	175	60	120	278	654	190	330 446*	228	170	25	17	80	30

c DMS3 P-2032

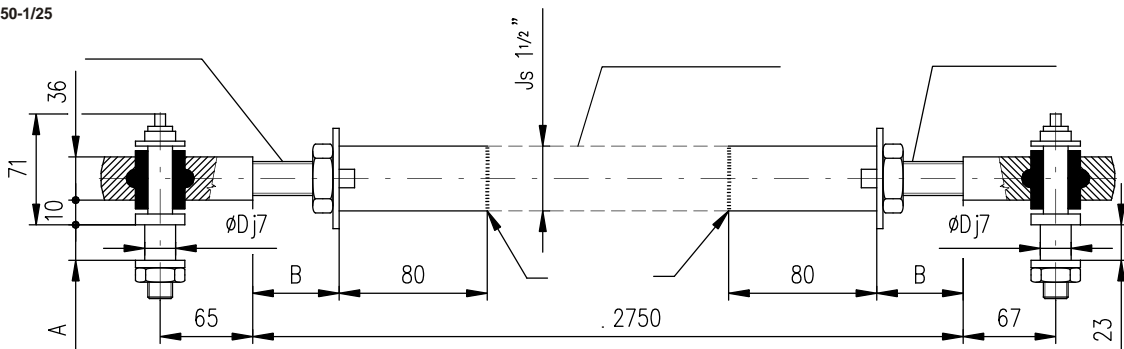
P - 1395

SP 2.3PA, SPR 2.3PA, SP 2.4PA, SPR 2.4PA

E

Exx	Y1	Z	V	Y	U _{h9}	H	ØS	H	S	U	V	Z	Y	Y1
SPR 2.3PA						43.1	40	12	66	56	4	7	E03	
SPR 2.4PA						53.8	50	16	82	70	4	7	E04	

TV 40-1/20 TV 50-1/25



P-1413/B	SPR 2.4PA	TV 50-1/25	28	Min.30	25
P-1413/A	SPR 2.3PA	TV 40-1/20	23	Max.50	20
			A	B	D

P - 1413