



- 220 V AC
- 
- 2
- 2
- e
- 
- IP 67

MPR

52 220.										x	-	x	x	x	x	x	/	x	x
---------	--	--	--	--	--	--	--	--	--	---	---	---	---	---	---	---	---	---	---

/	o	e	10)	
3.1	-25°C ... +55°C	C3	IP 67	1
2	-25°C ... +55°C	C3	IP 67	6

		230 V AC	Z296a	9
			ZK296a	8

32) 33)			230 V, 50Hz			
63 ÷ 125 Nm	32 s/90°	32 ÷ 34 s/90°	16 W	1 150 min <sup>-1</sup>	0.31 A	B
40 ÷ 100 Nm	16 s/90°	16 ÷ 18 s/90°				C
25 ÷ 63 Nm	8 s/90°	8 ÷ 10 s/90°				D

		60°	Z298/ZK298	A
		90°		B
		120°		C
		160°		D

		-	-	-	A
		-	1 x 100 W	Z5c/ZK5c	B
			1 x 2 000 W		F
		-	2 x 100 W	Z6c/ZK6c	K
			2 x 2 000 W		P
R/I	2-	4 - 20 mA	Z10g/ZK10g	S	
		0 - 20 mA		T	
		4 - 20 mA		V	
	3-	0 - 5 mA	Z257b/ZK257b	Y	
		4 - 20 mA		Q	
		0 - 20 mA		U	
2-	4 - 20 mA	Z269u/ZK269u	W		
	0 - 20 mA		Z		
	0 - 5 mA		D		
R/U	3-	0 - 10 V	Z257m/ZK257m	R	
		0 - 10 V	Z260u/ZK260u	I	
CPT	2-	4 - 20 mA	Z10g/ZK10g	5	
		0 - 5 mA	Z257n/ZK257n	J	
	3-	4 - 20 mA	Z269u/ZK269u	6	
		0 - 5 mA	Z260s/ZK260s	2	
52) DCPT 3M	2-	4 - 20 mA	Z10g/ZK10g	3	
		4 - 20 mA	Z269u/ZK269u		

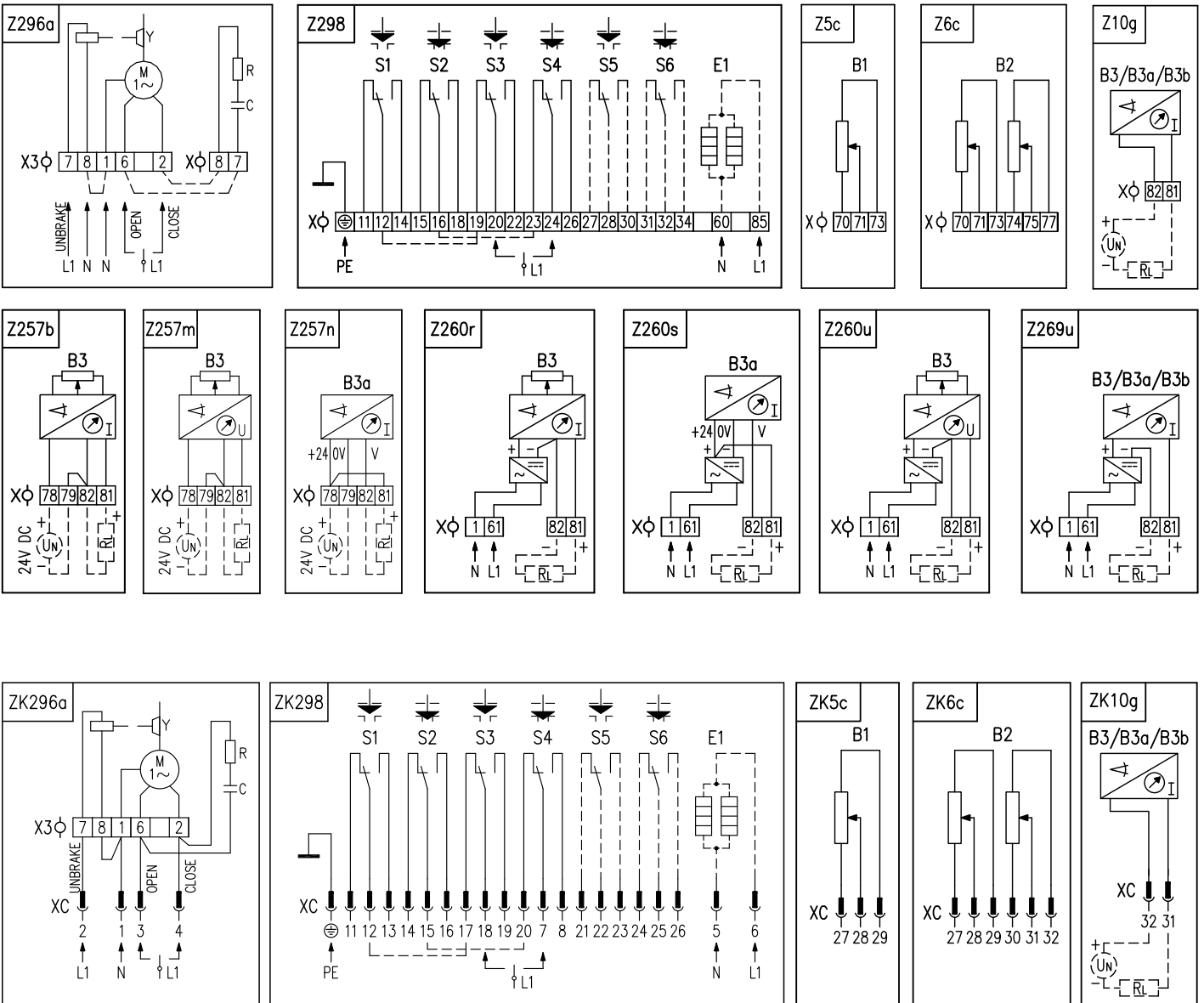
		TV360 (P-0210)	P-1050b	A
		(P-1090a)		B
		TV 360 + (P-1090a, P-0210)		C
				D

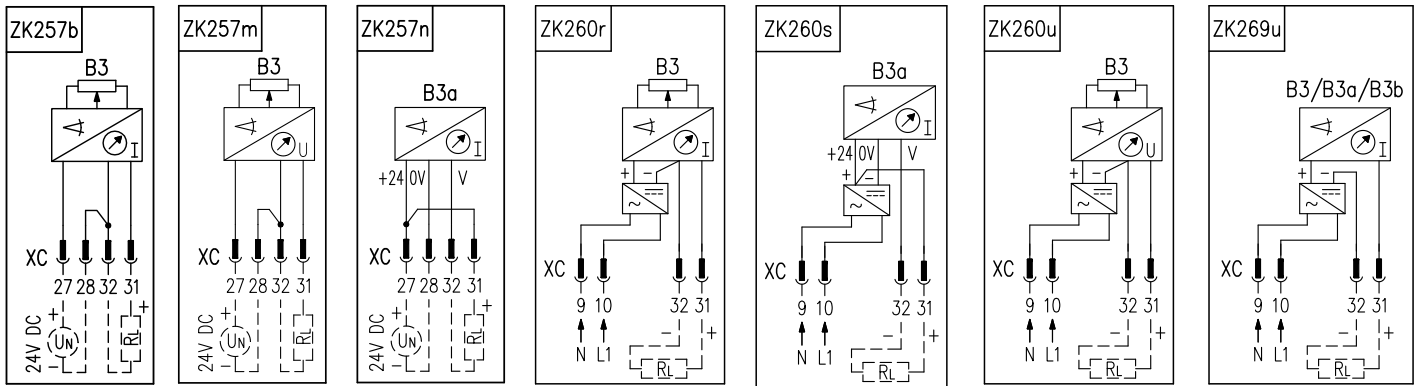
52 220. x - x x x x x x / x x			
			0 1
A	2	S5, S6	Z298/ZK298
B			0 2
: A+B=07			

10) : ISO 9223/EN ISO 12944-2.  
 32) :  
 33) :  
 : 0,8 S2-10 S4-25%, 6-90 /  
 : 0,6 S4-25%, 90-1200 /  
 52) CPT- , DCPT- ( )

MPR

P





12,5 19 mm.

32

.2,5 mm<sup>2</sup>, 3

M25x1,5

- 1.
2. X3:6-X:7 X3:2-X:8
- 3.

32, Z296

( 230 VAC 7 8 )

X3.

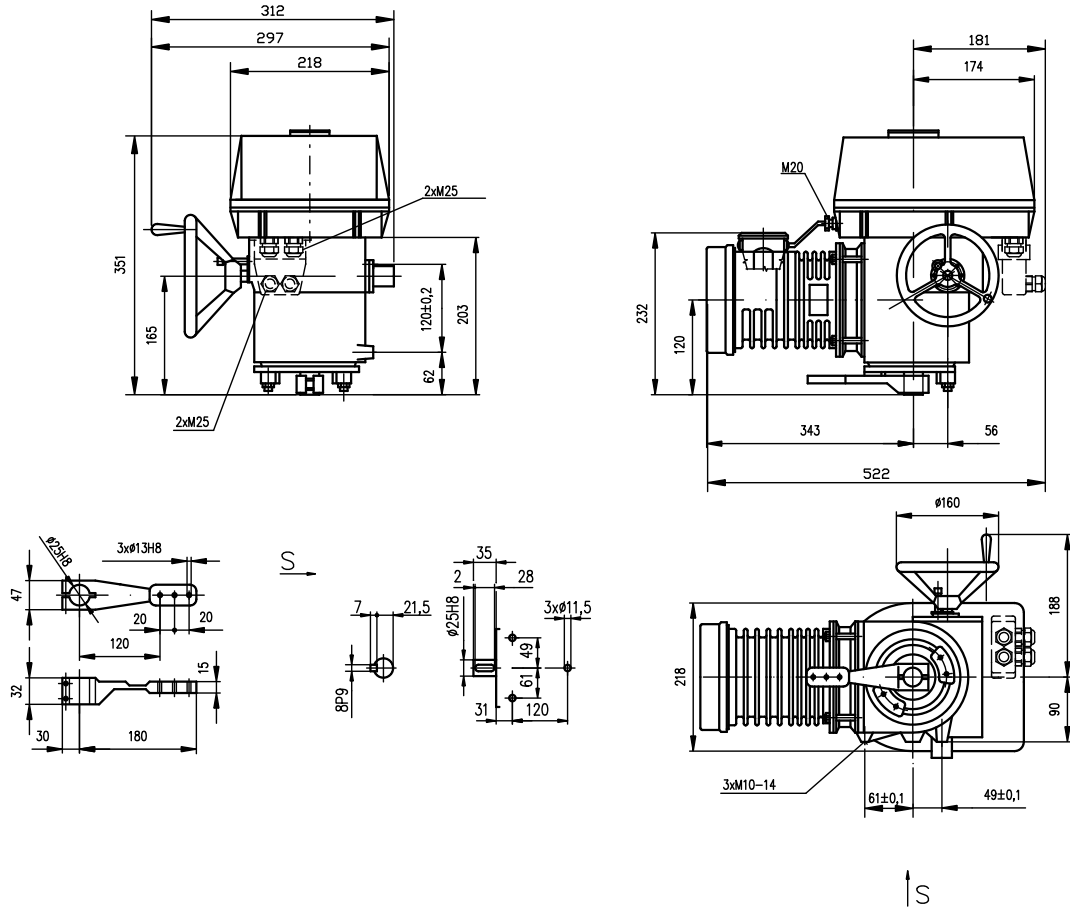
- Z5c/ZK5c .....
- Z6c/ZK6c .....
- Z10g/ZK10g .....
- Z257b/ZK257b .....
- Z257m/ZK257m .....
- Z257n/ZK257n .....
- Z260r/ZK260r .....
- Z260u/ZK260u .....
- Z260s/ZK260s .....
- Z269u/ZK269u .....
- Z296a/ZK296a .....
- Z298/ZK298 .....

CPT - 2-  
 , 3-  
 CPT, 3-  
 , 3-  
 CPT, 3-  
 , 2-

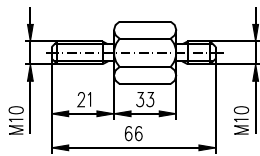
- B1 .....
- B2 .....
- B3 .....
- B3a .....
- B3b .....
- S1 .....
- S2 .....
- S4 .....
- S5 .....
- S6 .....
- Y .....
- E1 .....
- X .....
- X3 .....
- I .....
- U .....
- R .....
- R<sub>L</sub> .....

- CPT  
 DCPT ( )  
 " " " " "S3  
 " " " " "M

MPR

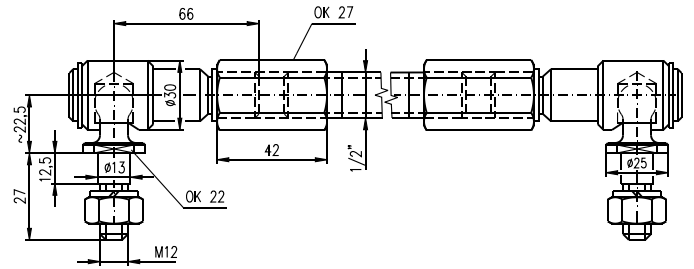


P-1050b



P-1090a

TV 360



P-0210

